



SUMMIT ENGINEERING, INC

Engineers + Surveyors + Planners + Landscape Architects

MEMO

DATE: January 15, 2010
TO: Scott Mapes, Project Engineer
FROM: Sheila McIntyre, Environmental Planner
RE: Addison Solar Project

On December 2, 2009, I conducted a wetland delineation at the Pomerleau property located at the corner of Monkton Road and Route 7 in Ferrisburgh, Vermont. The majority of the 16 acre parcel is characterized as a mowed hayfield.

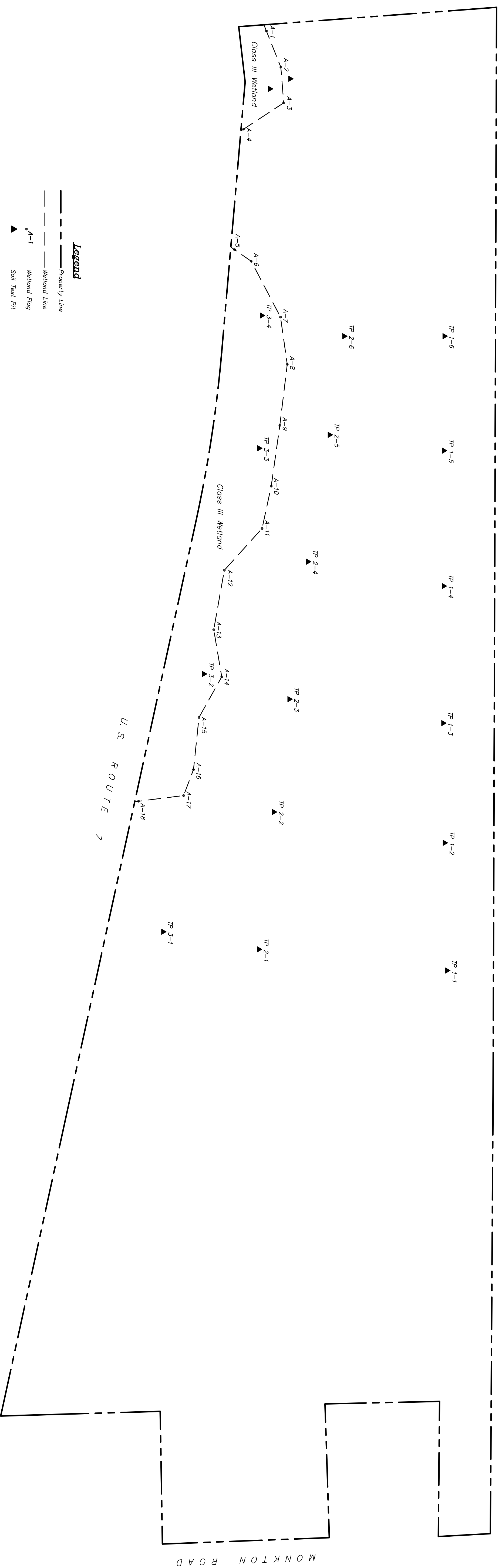
The site primarily supports Covington and Panton silty clays, and Vergennes clay soils. The site was investigated using a backhoe. Eighteen test pits were dug along three transects to assess soil properties. Additional soil analysis was conducted with a hand auger.

The wetland boundary was determined and flagged in the field. The wetland was determined to be Class Three under the Vermont Wetland Rules.

Regarding wetland functions and values, the wetland is marginal and functions primarily to handle stormwater runoff from the Route 7 corridor. This function is not considered to be significant.

On December 9, 2009, Alan Quackenbush, of the Vermont Agency of Natural Resources Water Quality Division, conducted a site visit to confirm the wetland boundary and verify the classification. The confirmed boundary and test pit locations were surveyed and are illustrated on the Summit Engineering plan entitled "Wetland Plan," Sheet S1, dated 12/11/09.

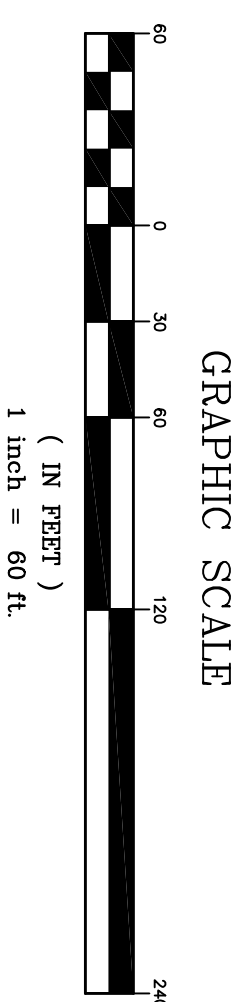
Based on the minimal value and marginal character of the wetland, construction in the vicinity does not warrant a wetland buffer zone to protect functions and values. I do, however, recommend that the wetland be avoided and protected during construction through the use of silt fencing and sediment and erosion controls up slope. Further, I recommend a setback of 25 ft to ensure there is no secondary disturbance during construction that might result from machinery and equipment.



Legend

- Property Line
- - - Wetland Line
- ▲ A-1 Wetland Flag
- ▲ Soil Test Pit

Reference Plans:
 1.) "A Survey of Land of Horland & Jeanne Bodelle to be Deeded To Ernest Pomerleau" by Property Design, dated February 1994.
 2.) "A Preliminary Site Plan & Topographical Study of the Intersection of U.S. Route 7 & Monkton Road and Adjacent Areas by Property Design, dated December 1987."



Note:
 1.) The wetland was delineated by Sheila McIntyre, Summit Engineering Inc. on December 2, 2009. Wetland delineation and classification were confirmed by Alan Quackenbush, VT DEC Wetlands Office on December 9, 2009.
 2.) The property line depicted was calculated from the reference survey. Some of the property line along U.S. Route 7 was unclear on said survey. Further survey may be necessary to accurately define the property line in this area.

SUMMIT ENGINEERING, INC. Engineers • Surveyors • Planners • Landscape Architects 50 Jay Drive South Burlington, VT 05403 Bus: (802) 658-5888 Fax: (802) 658-3829	SURVEY NPN/GDO DESCRIBED		WETLAND PLAN POMERLEAU REAL ESTATE	DATE 12/11/2009
	DRAWN NPN CHECKED SM SCALE 1"=60'			DRAWING NO. S1

FILE NAME: S01R02

U.S. ROUTE 7 - MONKTON ROAD
 FERRISBURGH, VERMONT

©